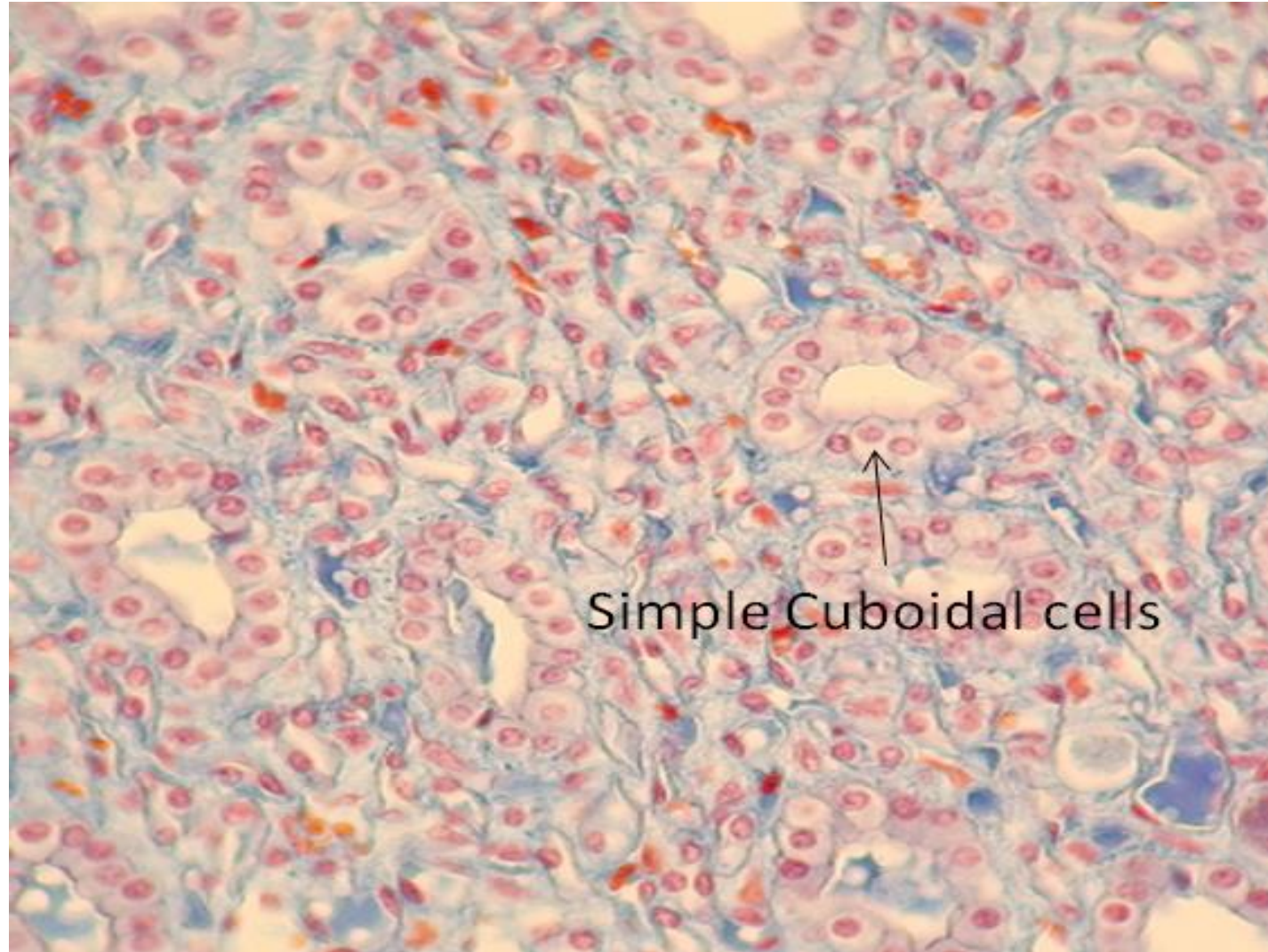


Tissues

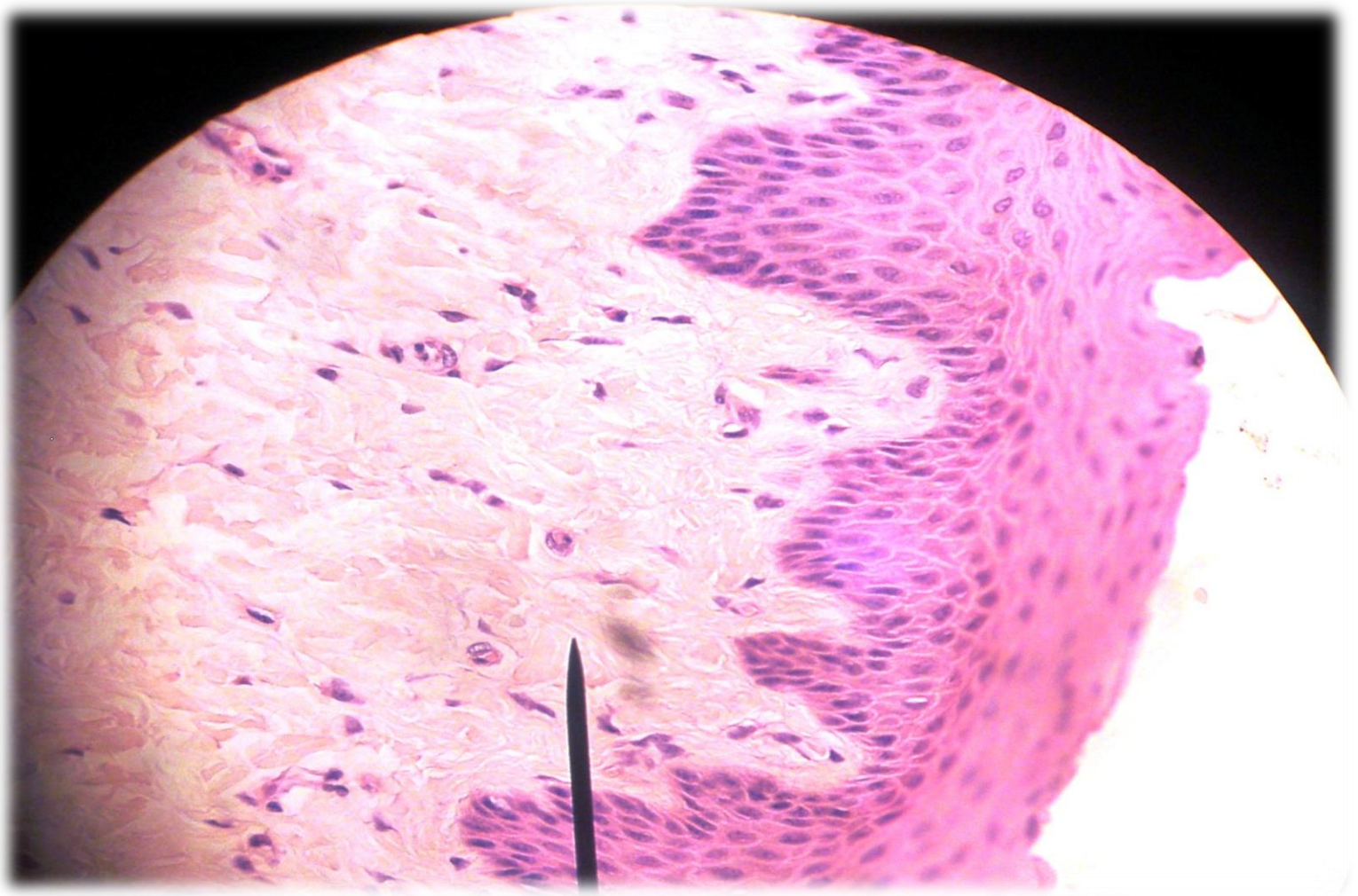
Simple Cuboidal Epithelium



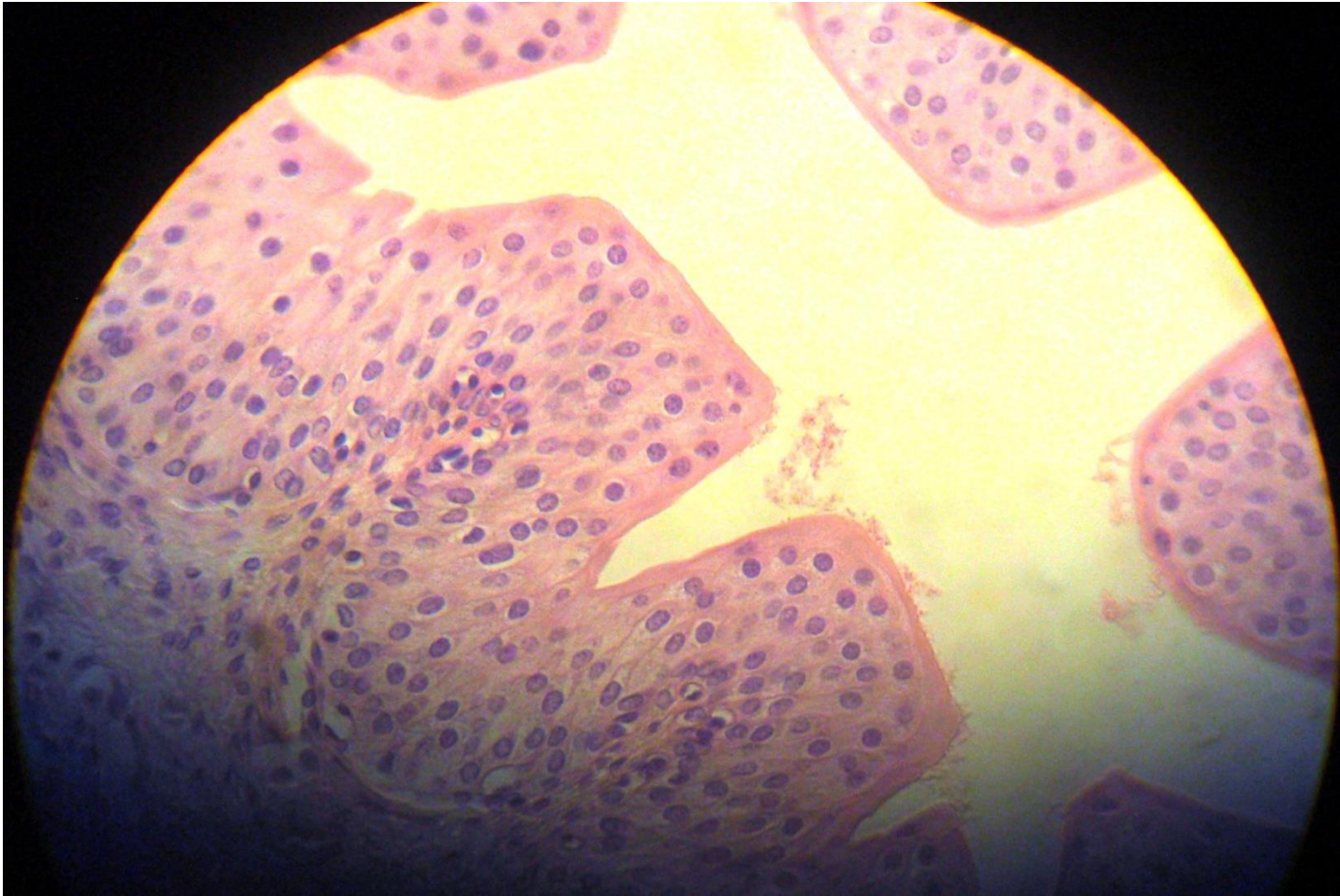
Simple Columnar Epithelium



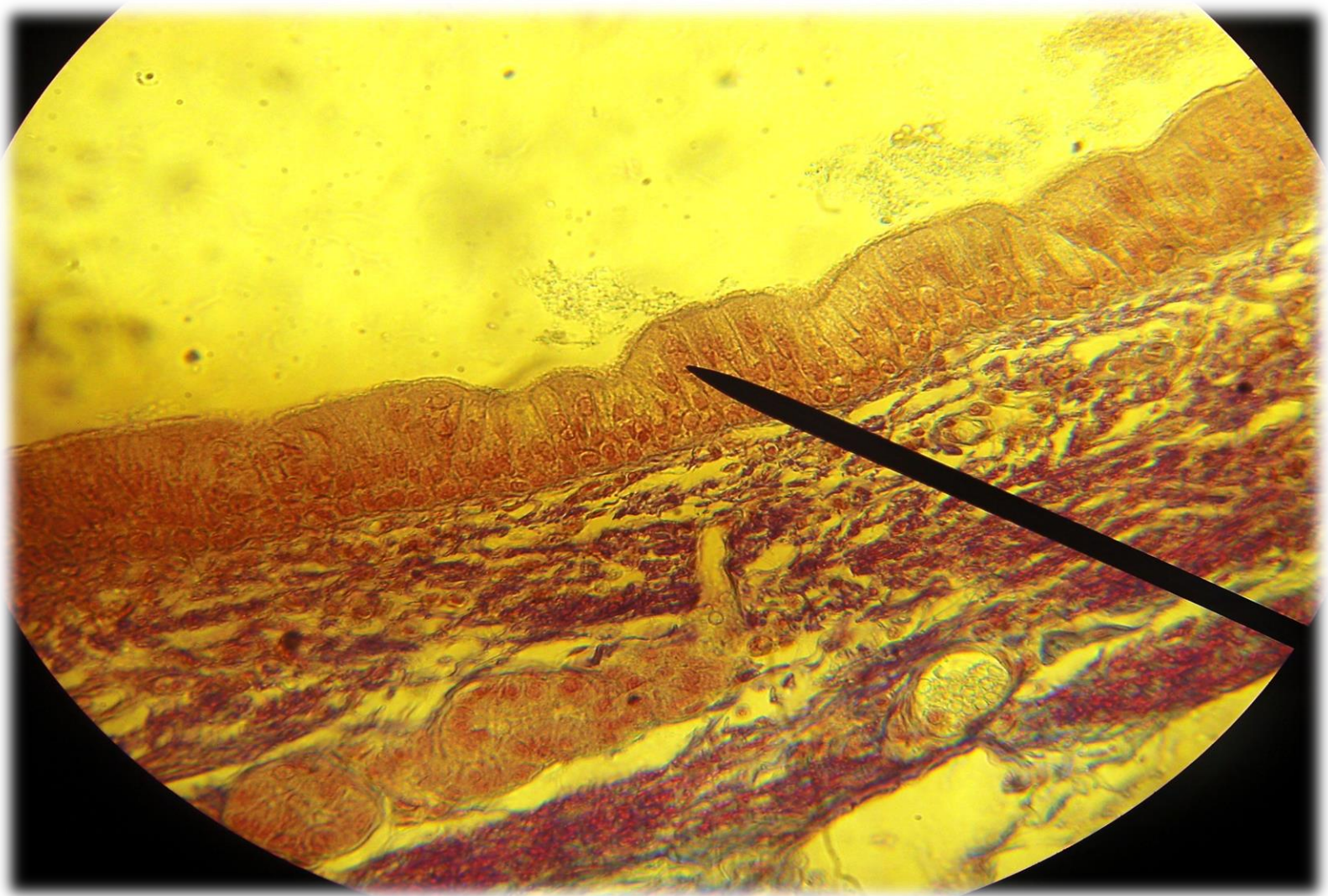
Stratified Squamous Epithelium



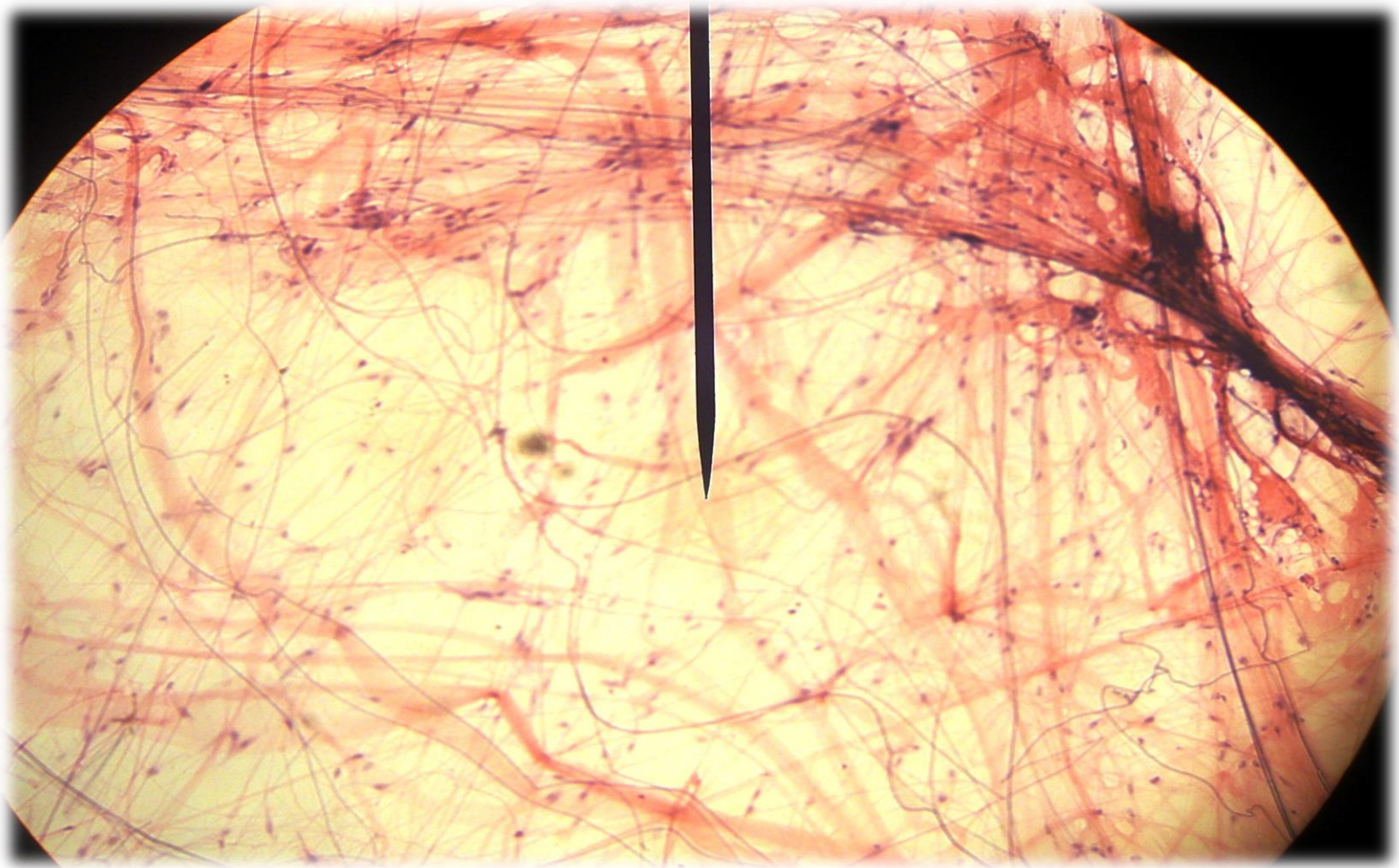
Transitional Epithelium



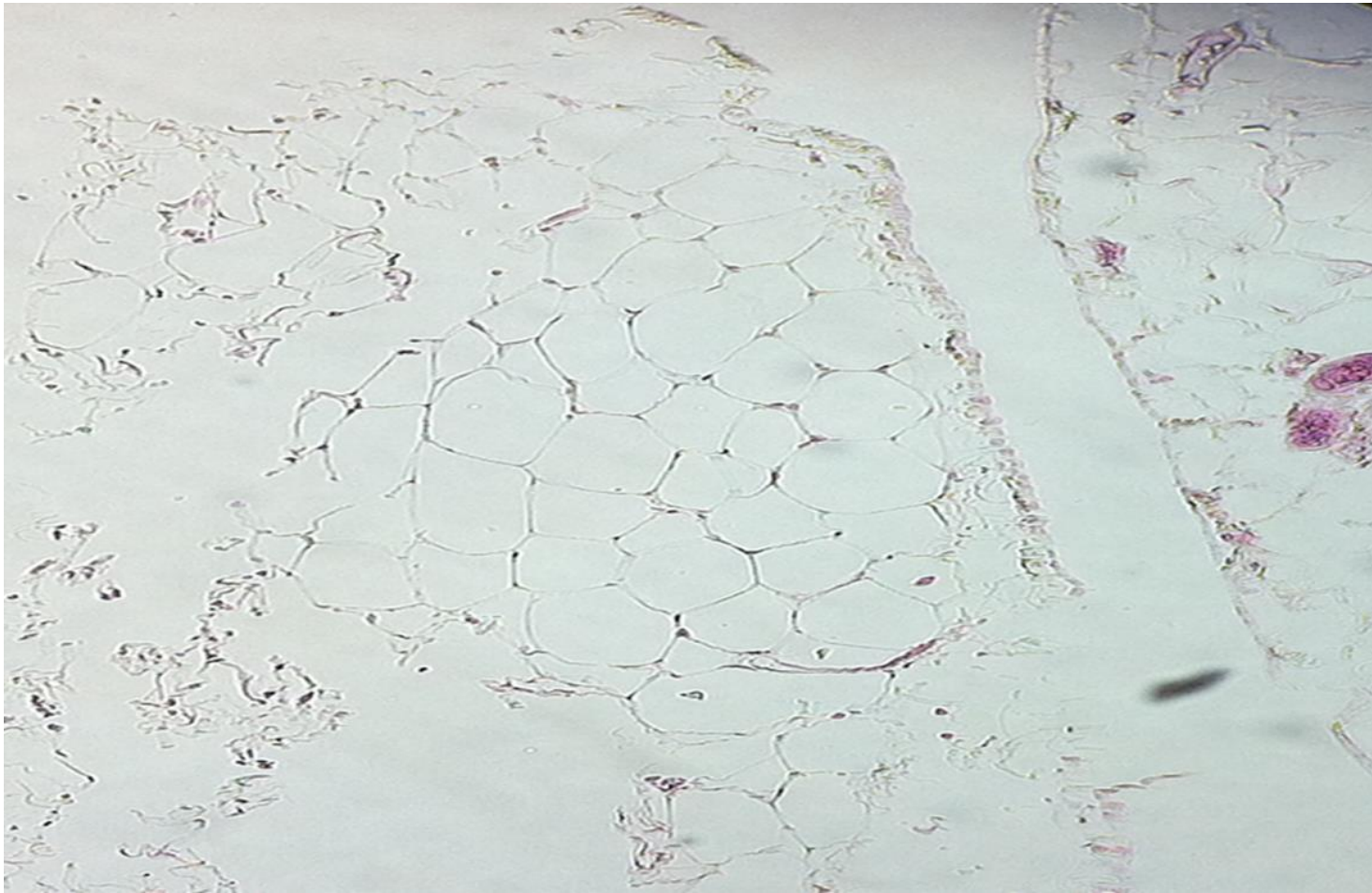
Pseudo-stratified Columnar Epithelium



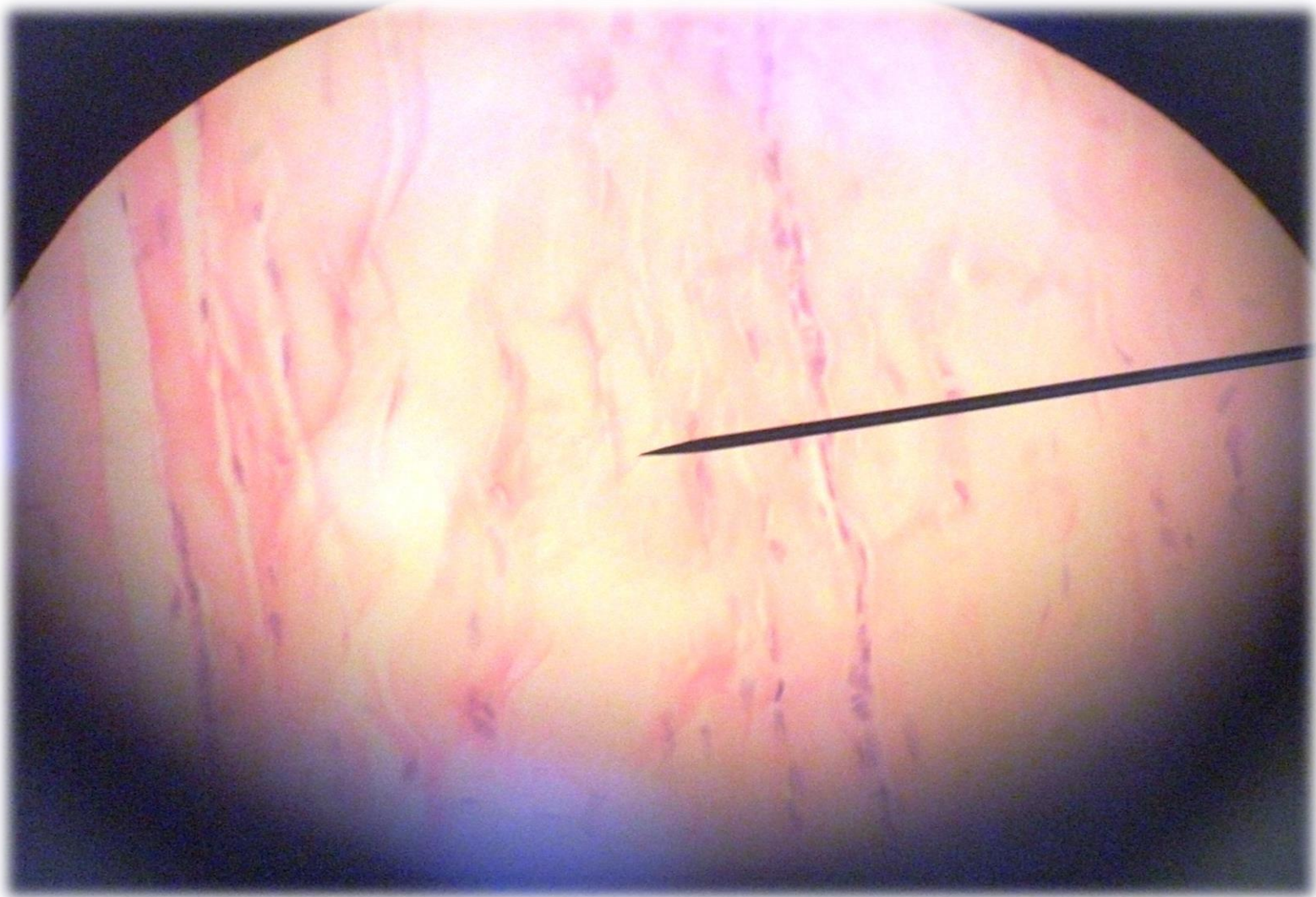
Connective Areolar



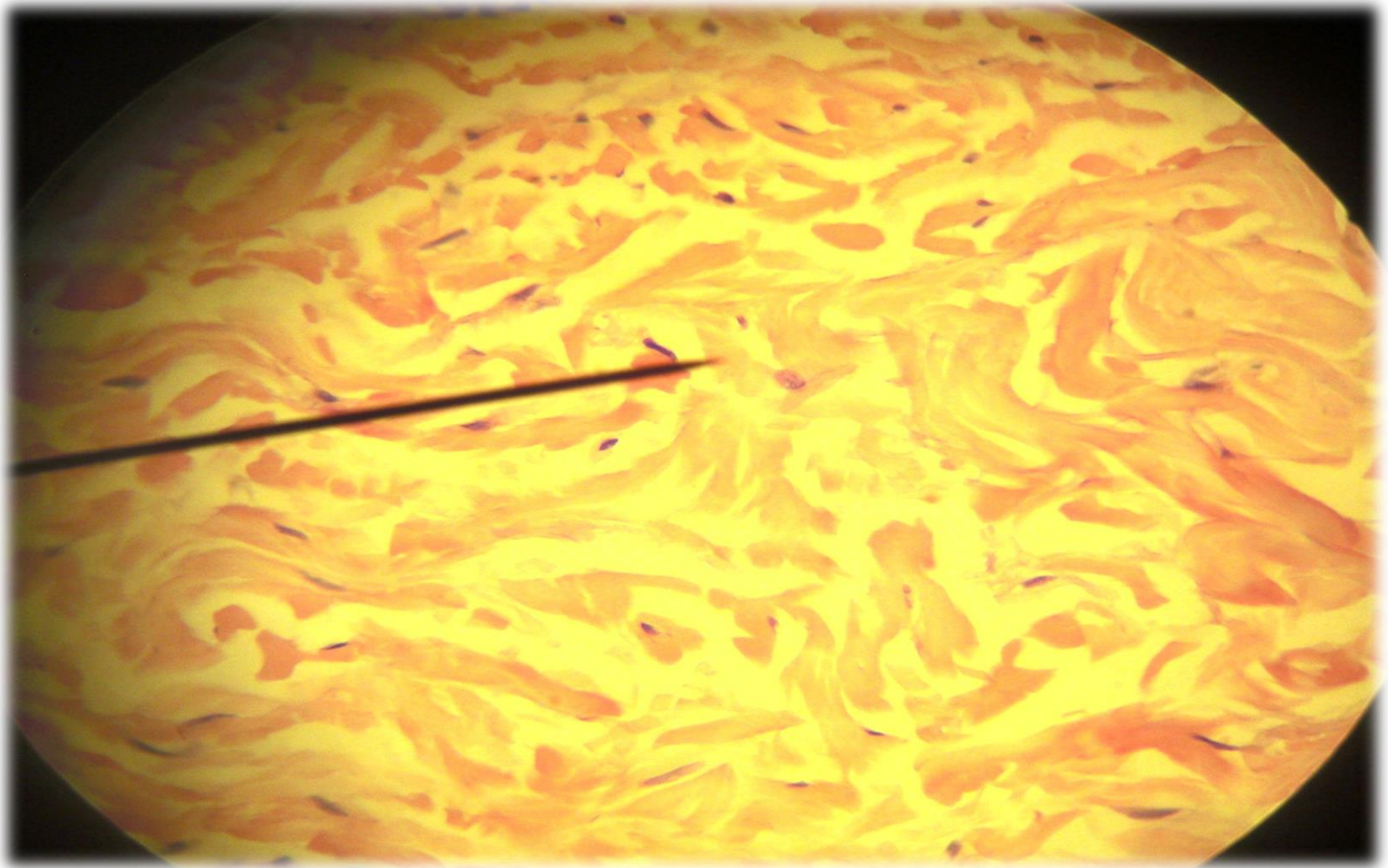
Adipose Tissue (Connective)



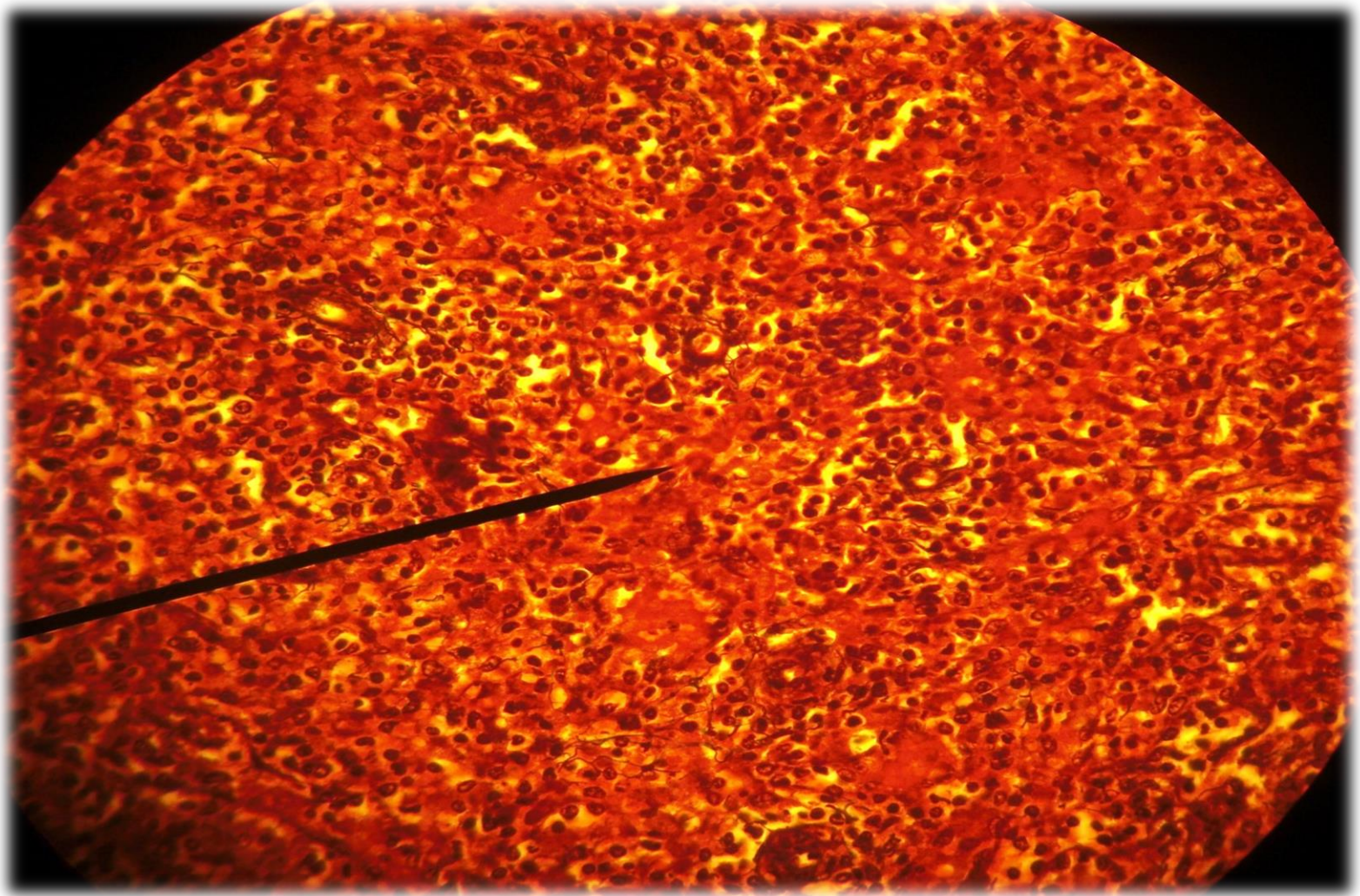
Dense Regular Connective Tissue



Dense Irregular Connective Tissue



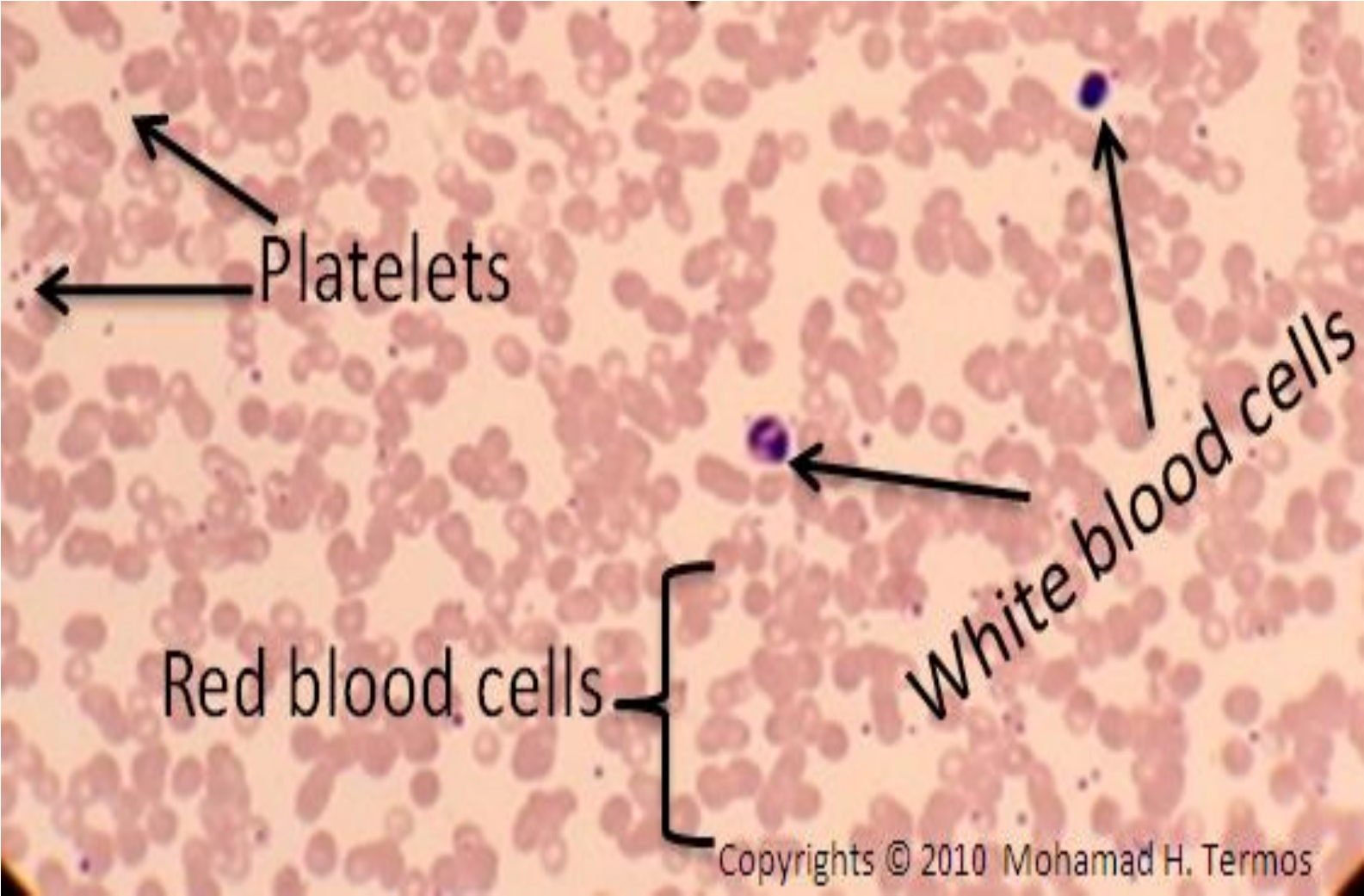
Reticular Connective Tissue



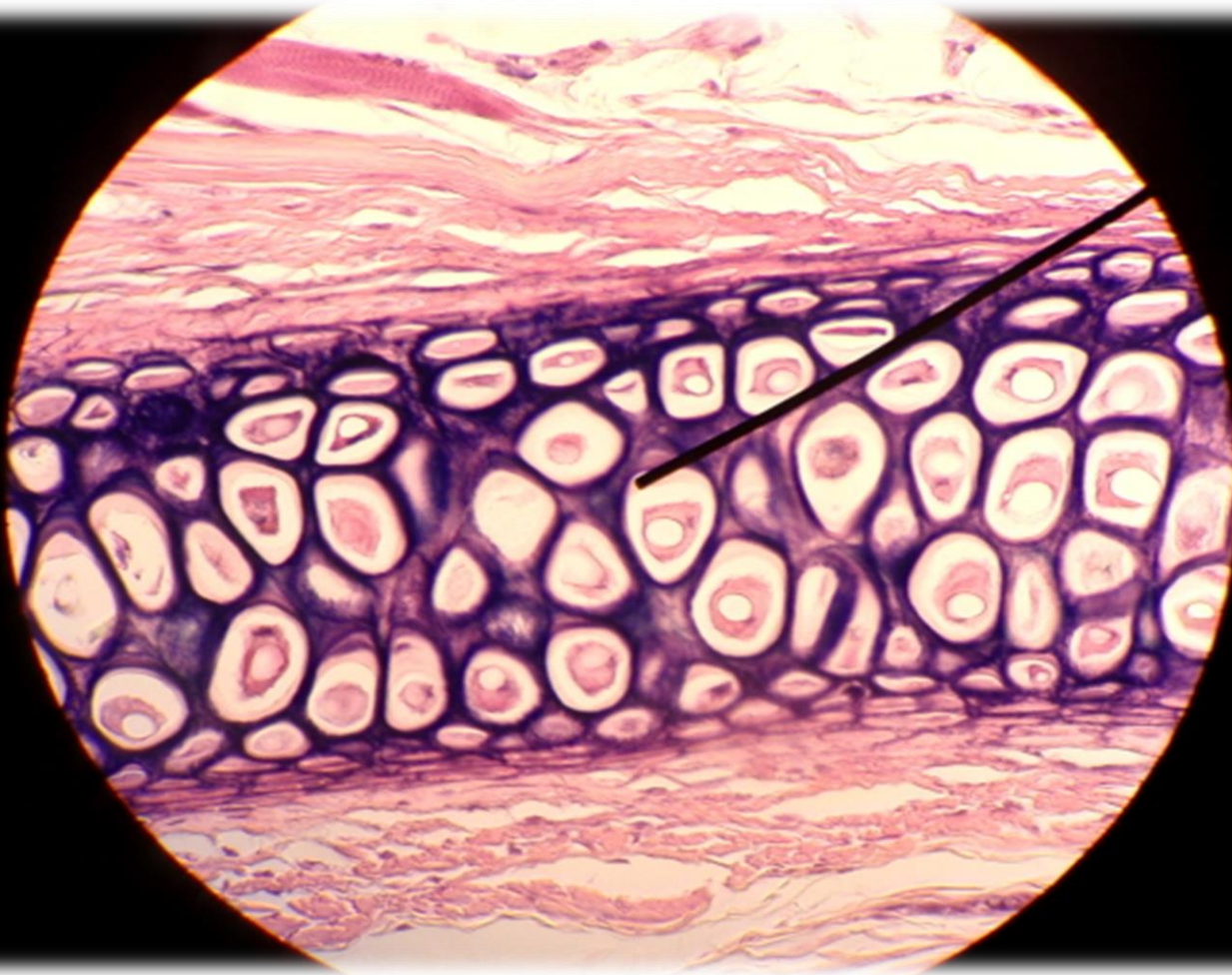
Bone Tissue



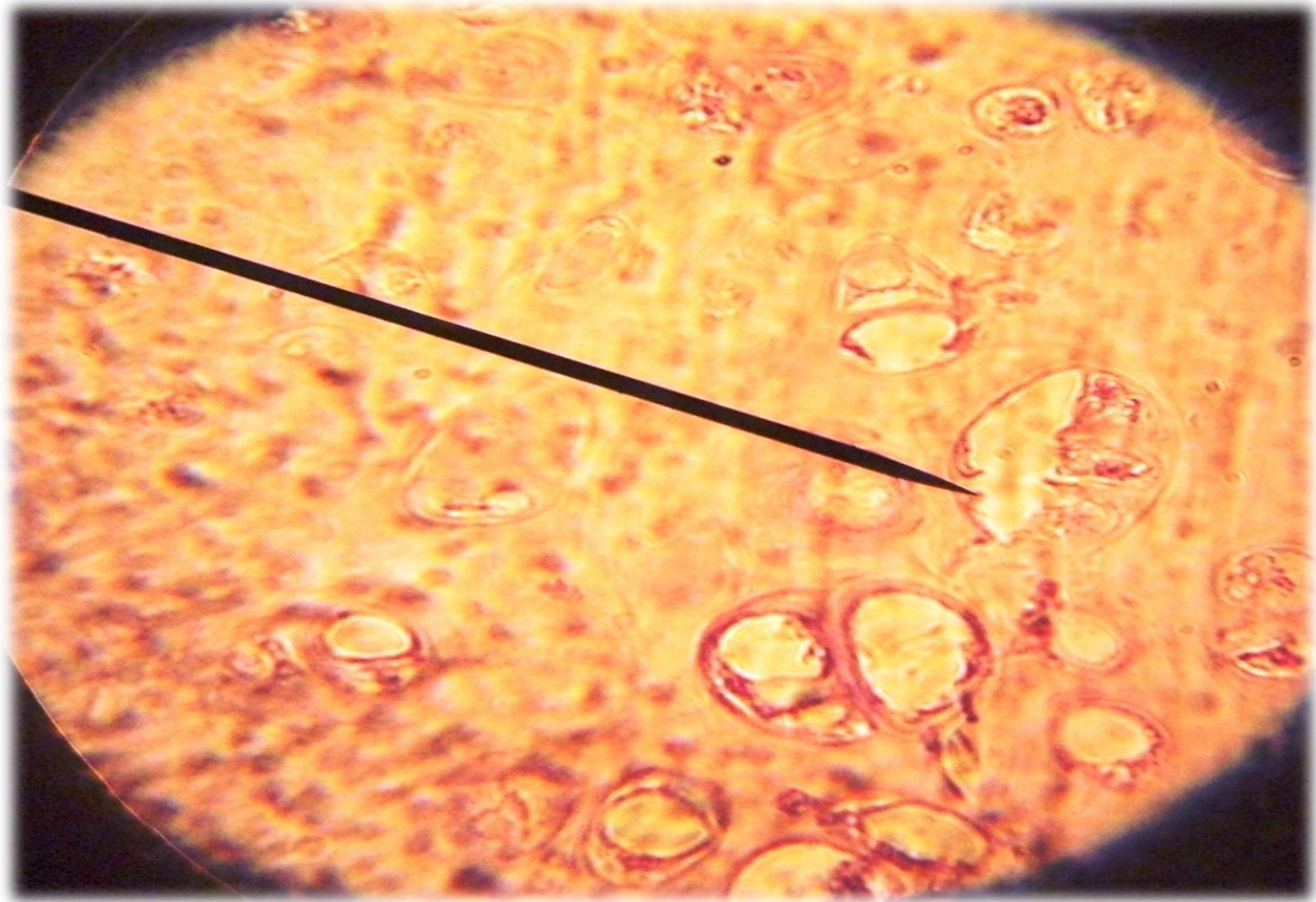
Blood Tissue



Elastic Cartilage



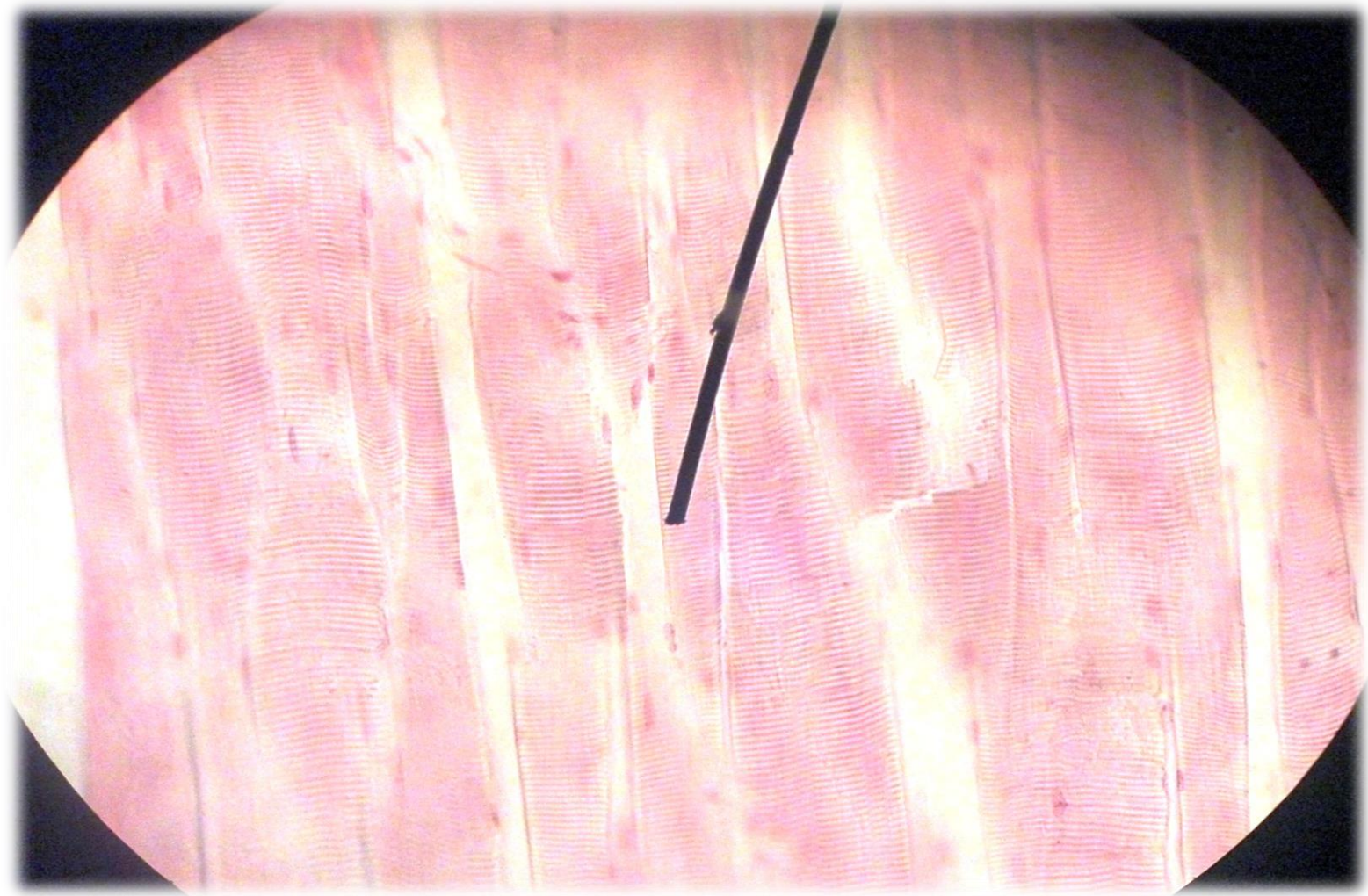
Hyaline Cartilage



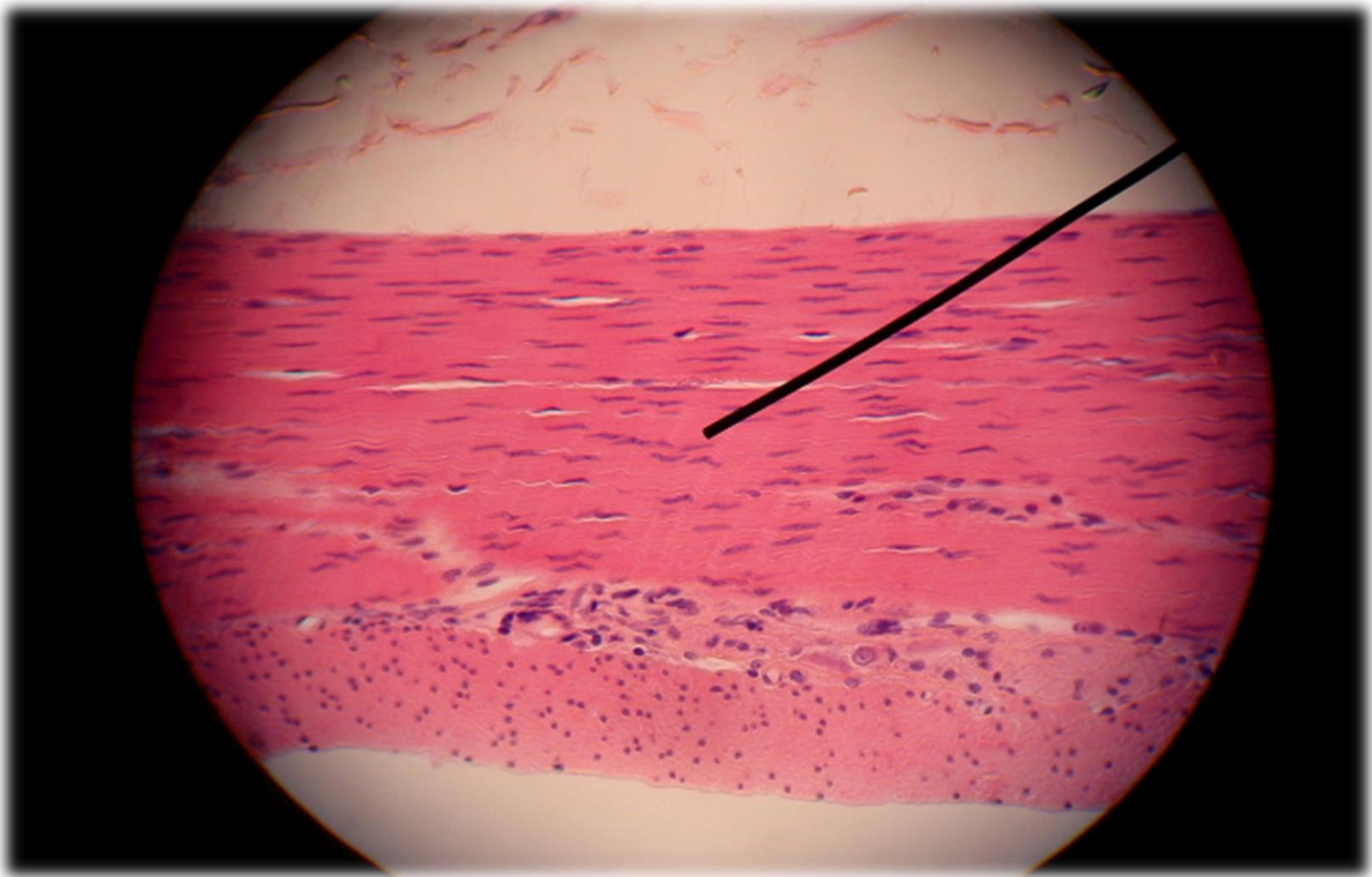
Fibrocartilage



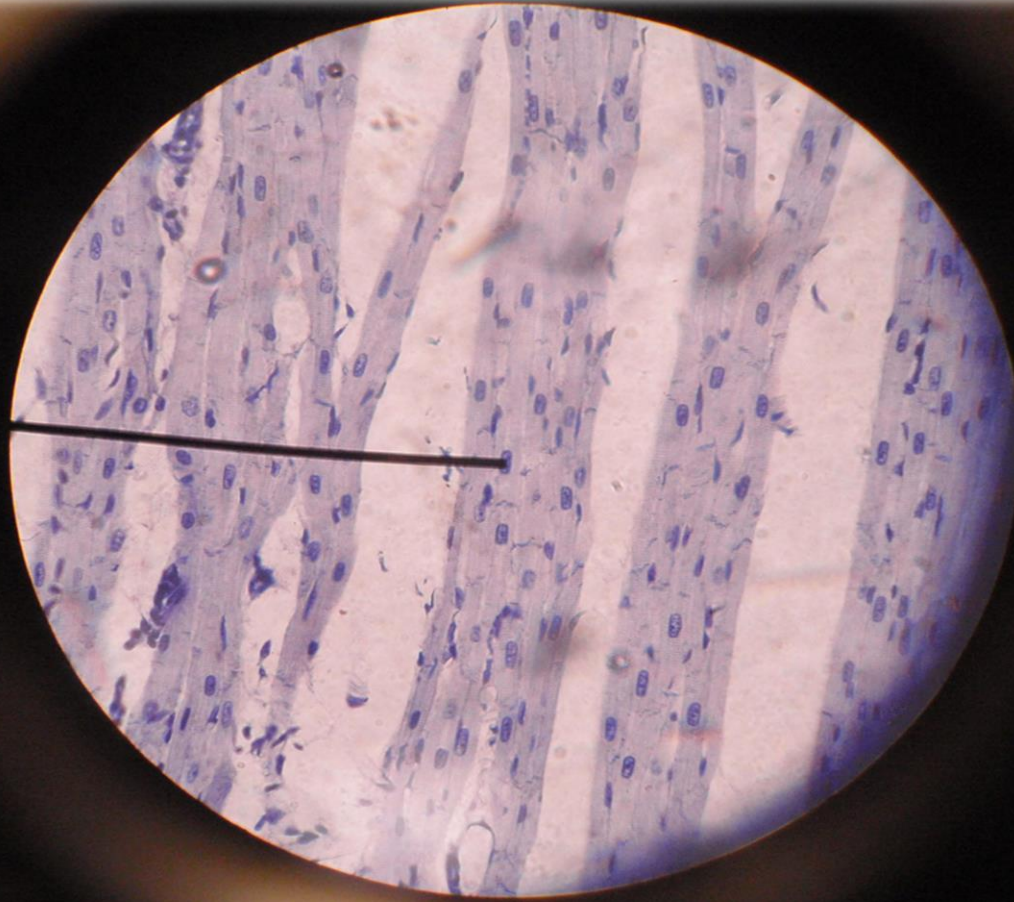
Skeletal Muscle Tissue



Smooth Muscle Tissue



Cardiac Muscle Tissue



Nerve Tissue

