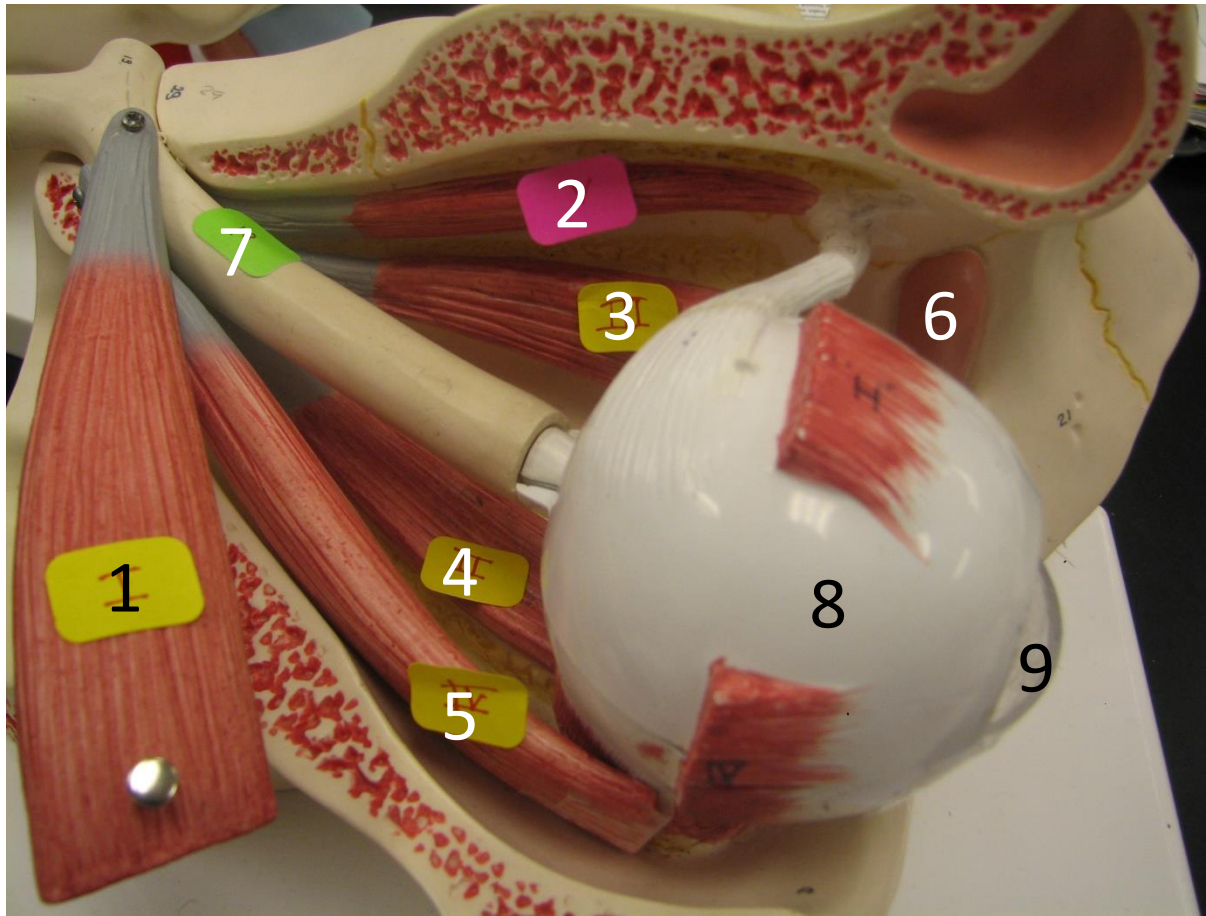
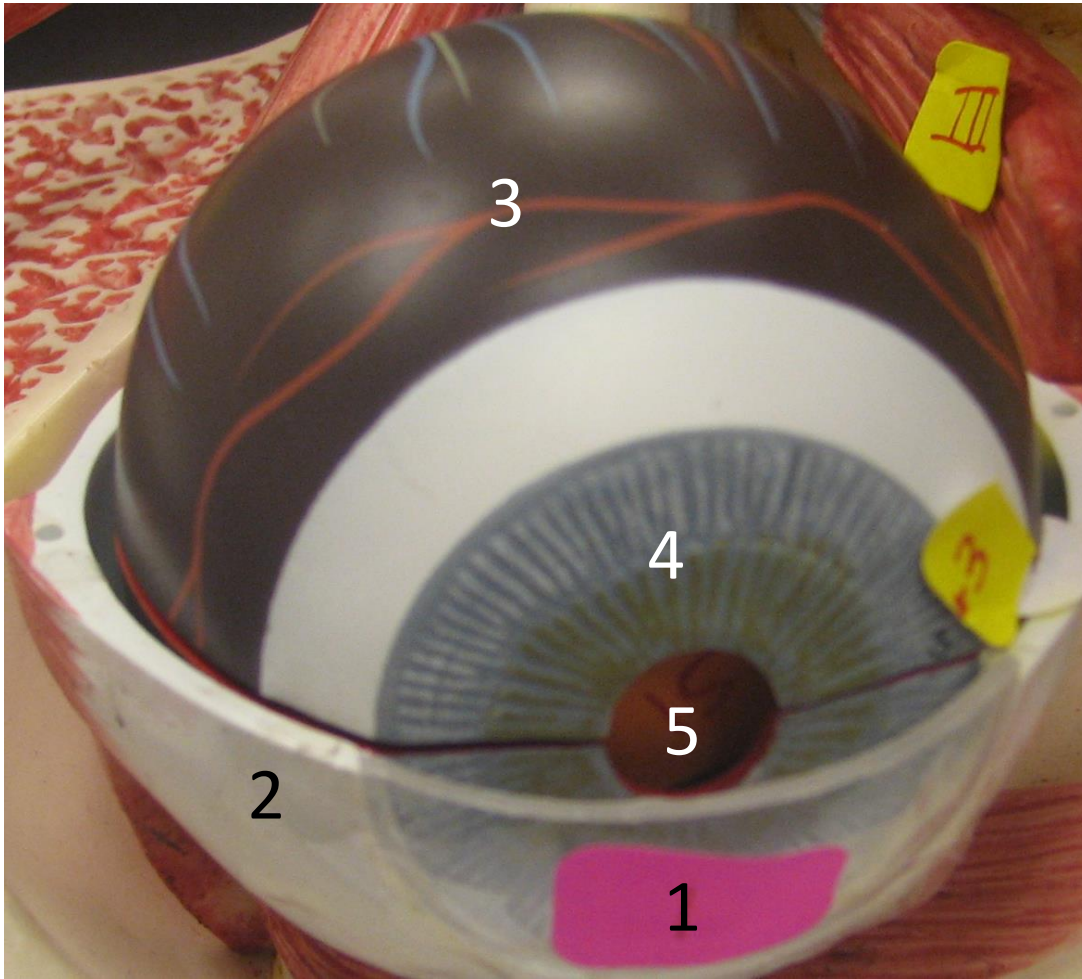


The Sense Organs

Prepared by Dr. Mohamad Hani Termos

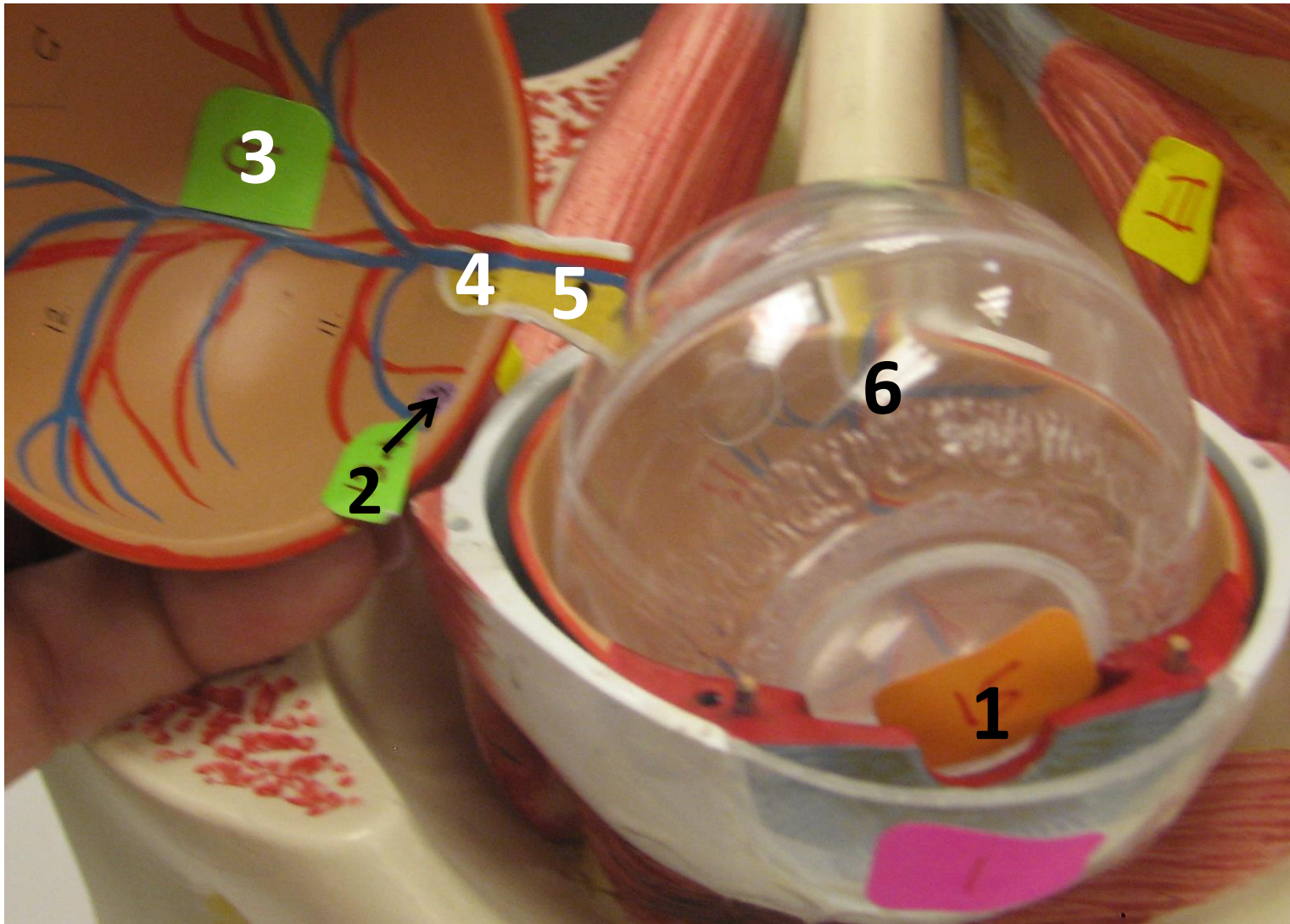


Eye muscles: 1: superior rectus, 2: superior oblique, 3: medial rectus, 4: inferior rectus, 5: lateral rectus, 6: inferior oblique, 7: optic nerve, 8: sclera, 9: cornea



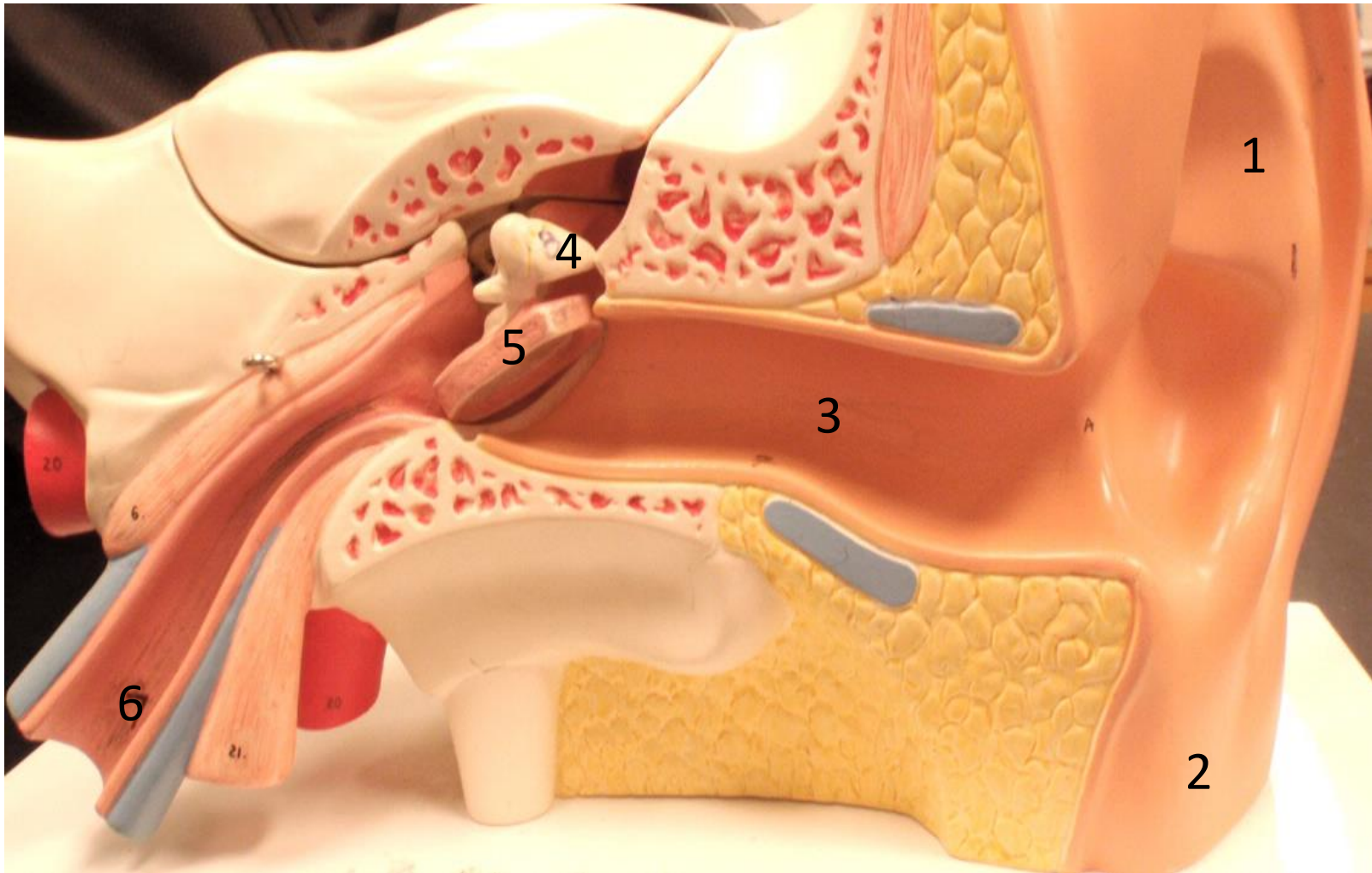
External anatomy of the eye

1: cornea, 2: sclera, 3: choroid, 4: iris, 5: pupil

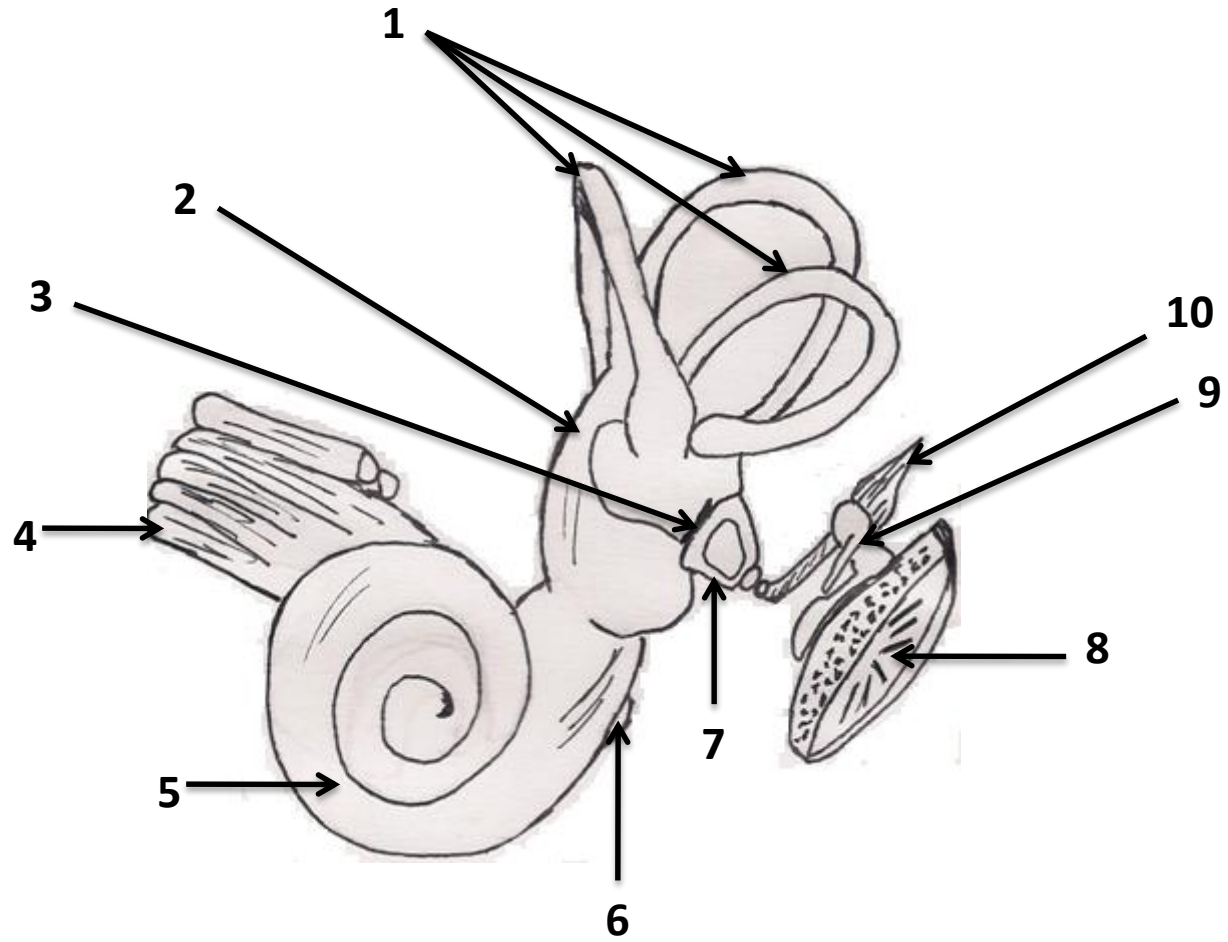


Internal anatomy of the eye

1: lens, 2: fovea centralis, 3: retina, 4: optic disc, 5: optic nerve, 6: vitreous humor

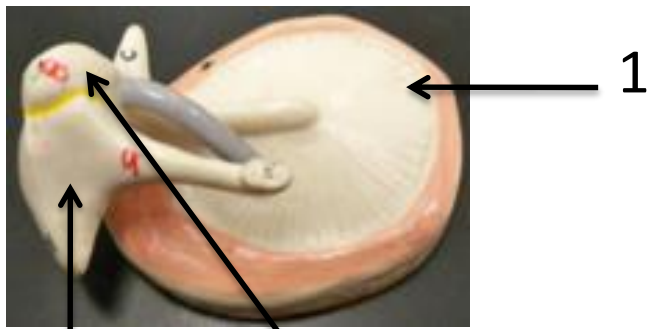


Anatomy of the ear: 1: pinna, 2: lobule, 3: external ear canal (external auditory canal), 4: malleus, 5: tympanic membrane (eardrum), 6: Eustachian tube (auditory tube).



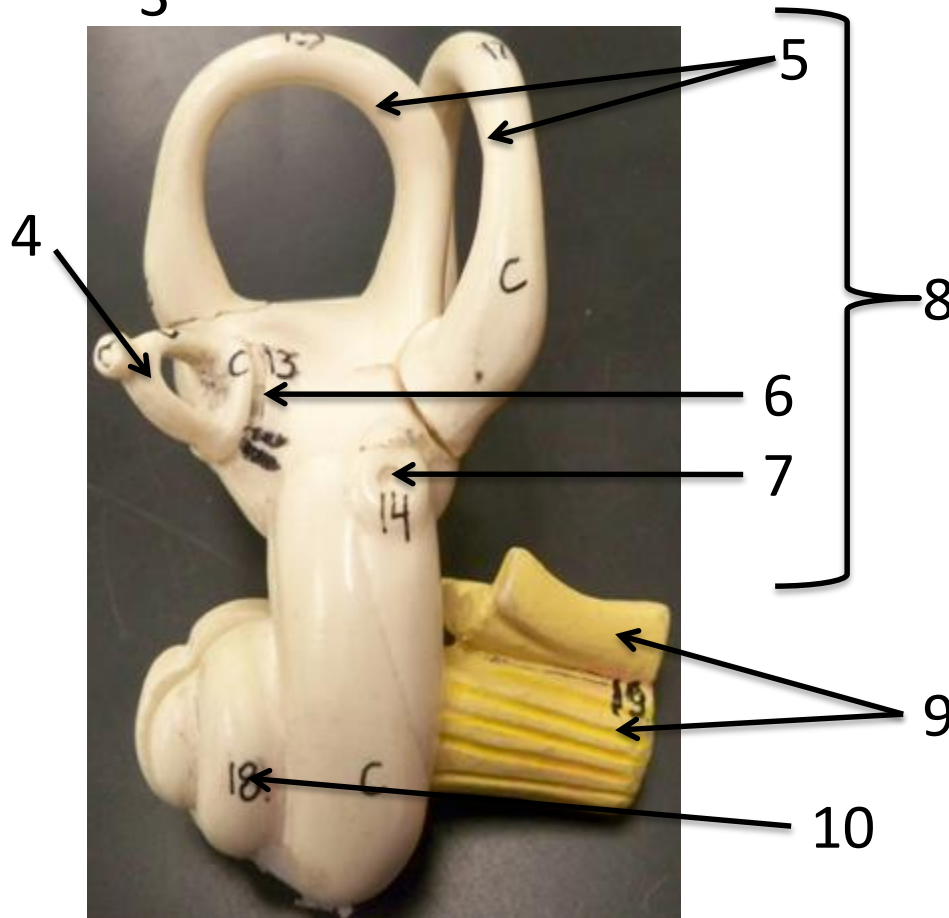
Key

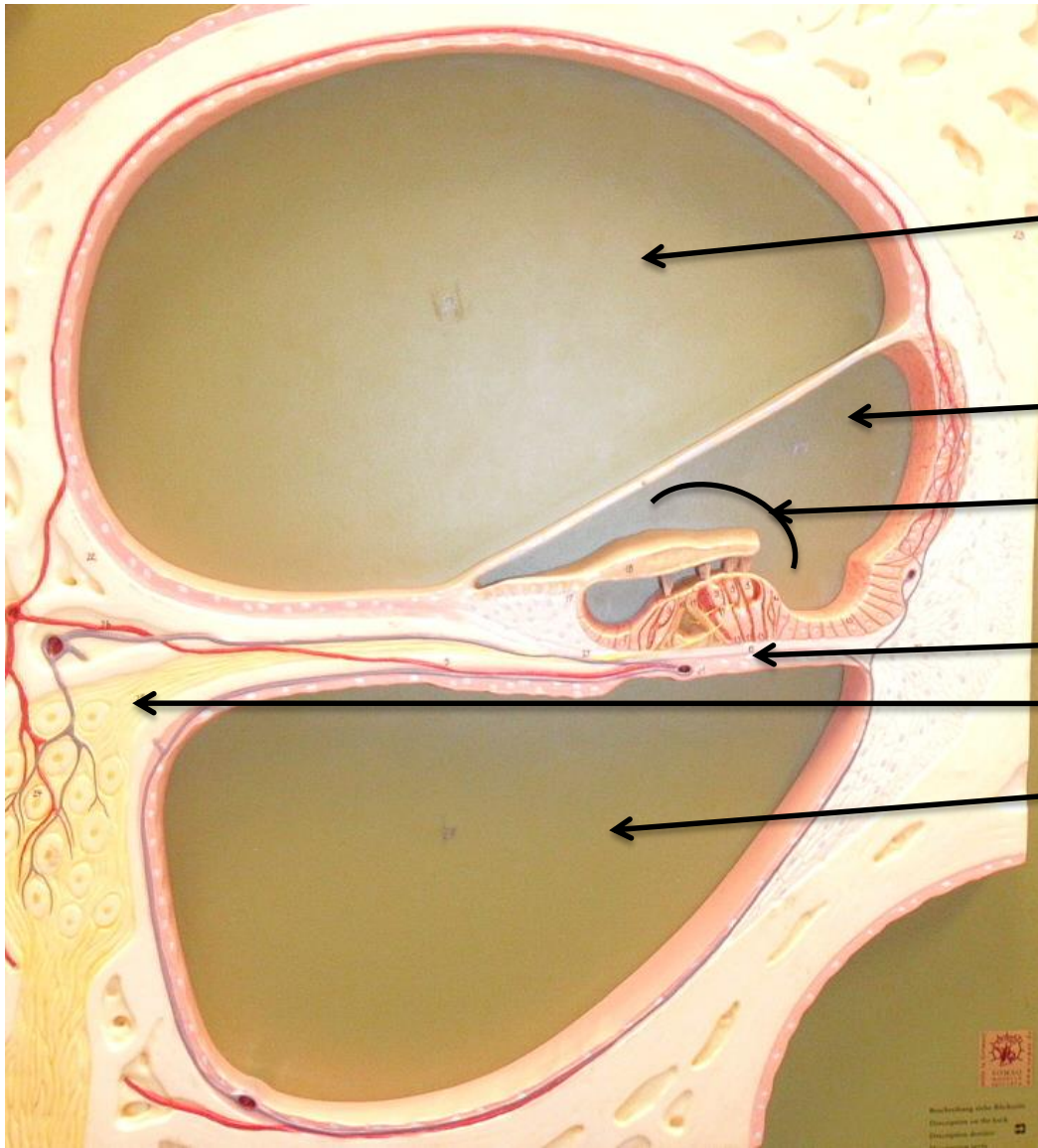
Middle and Inner ear structures: 1: Semicircular canals, 2: vestibule, 3: oval window (underneath the stapes), 4: vestibulocochlear (auditory) nerve, 5: cochlea, 6: round window, 7: stapes (stirrup), 8: tympanic membrane (ear drum), 9: malleus (hammer), 10: incus (anvil)



Middle ear: 1: tympanic membrane (eardrum),
 2: malleus (hammer),
 3: incus (anvil)

Inner ear: 4: stapes (stirrup)
 5: semicircular canals,
 6: oval window (underneath stapes),
 7: round window,
 8: vestibule,
 9: vestibulocochlear nerve (VIII),
 10: cochlea





1

2

3

4

5

6

Wiederholung siehe Bild 1
Beschreibung der Seh-
organe und der Seh-
organe des Menschen
11

Key

Inner Ear: 1- Scala vestibule, 2- scala media, 3- organ of corti, 4- basilar membrane, 5- auditory nerve, 6- scala tympani.