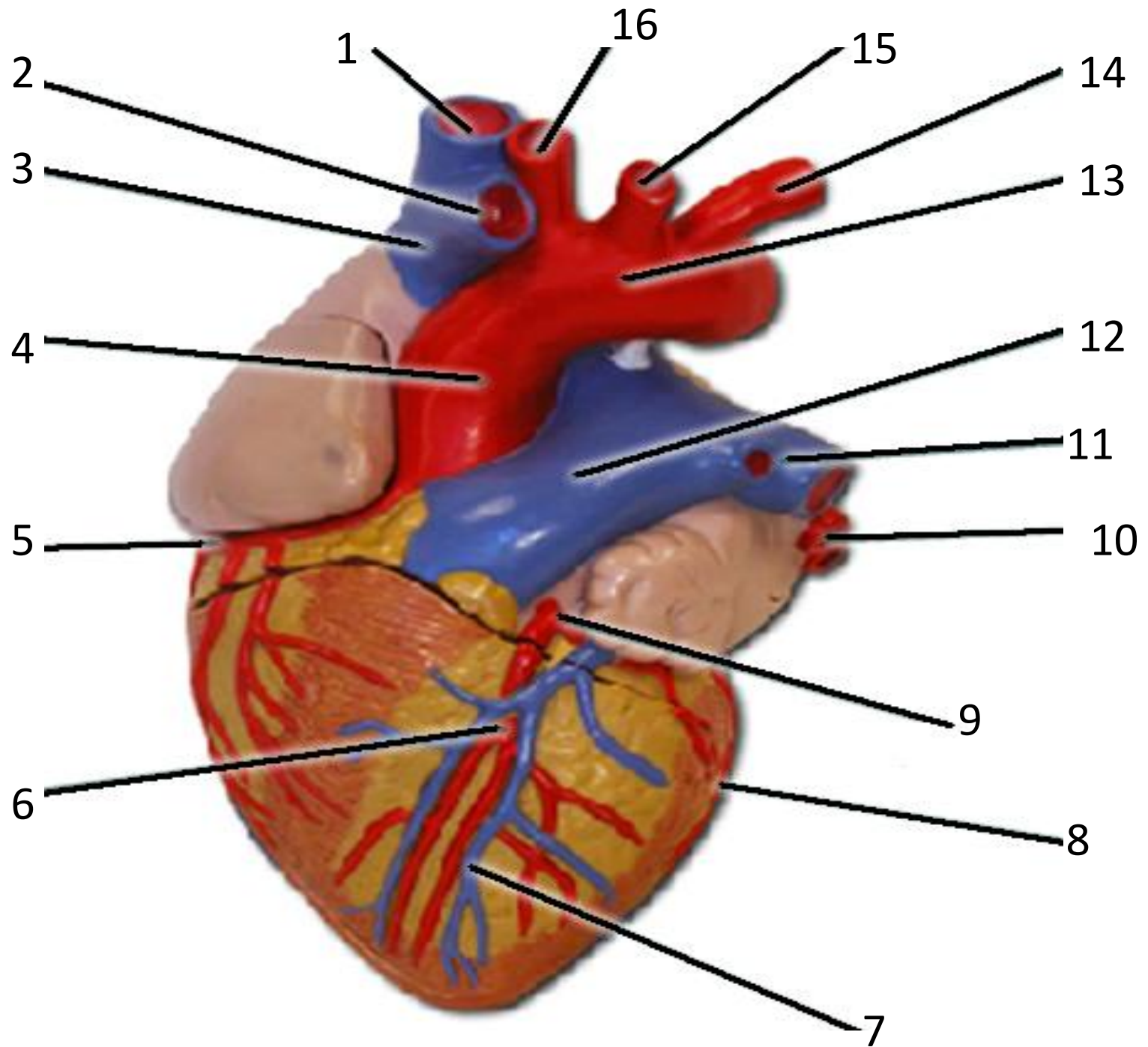


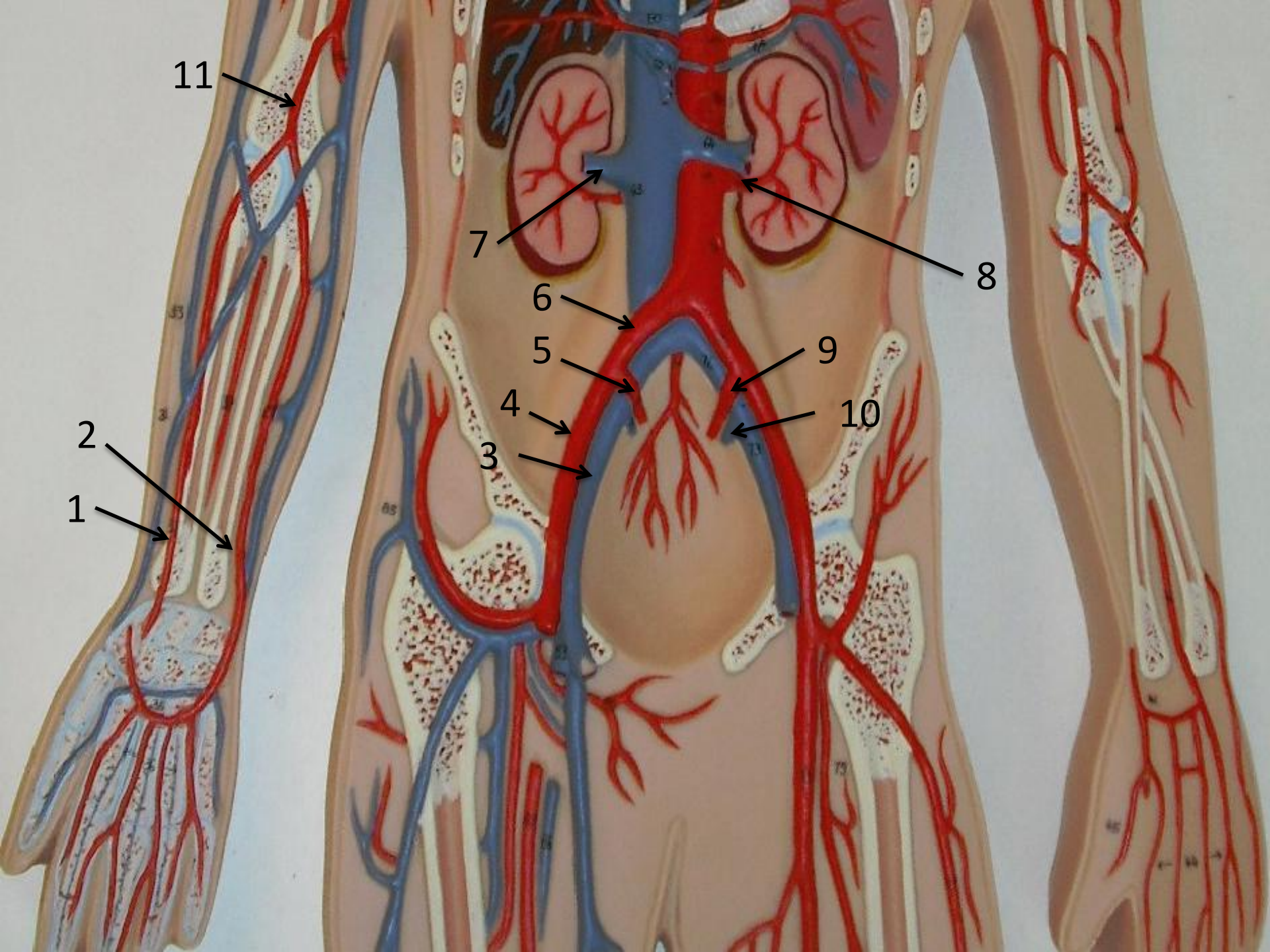
Key

Heart: 1: superior vena cava, 2: ascending aorta, 3: pulmonary semilunar valve, 4: tricuspid valve, 5: chordae tendineae, 6: papillary muscle, 7: trabeculae carnae, 8: right ventricle, 9: apex, 10: left ventricle, 11: bicuspid valve (mitral valve), 12: aortic semilunar valve, 13: left pulmonary veins, 14: left pulmonary artery, 15: left auricle, 16: interventricular septum, 17: aortic arch, 18: left subclavian artery, 19: left common carotid artery, 20: brachiocephalic trunk



Key

Anterior view of heart: 1: right brachiocephalic vein, 2: left brachiocephalic vein, 3: superior vena cava, 4: ascending aorta, 5: right coronary artery, 6: anterior interventricular artery, 7: great cardiac vein, 8: circumflex artery, 9: left coronary artery, 10: left pulmonary vein, 11: left pulmonary artery, 12: pulmonary trunk, 13: aortic arch, 14: left subclavian artery, 15: left common carotid artery, 16L brachiocephalic trunk.



Key

Blood vessels: 1: radial artery, 2: ulnar artery, 3: right external iliac vein, 4: right external iliac artery, 5: right internal iliac artery, 6: right common iliac artery, 7: right renal vein, 8: left renal artery, 9: left internal iliac artery, 10: left internal iliac vein, 11: brachial artery.